



THE MAKING OF A HORNER FLOOR

RANCHO SOLANO EDITION

BECAUSE WE KNOW YOUR BIGGEST INVESTMENT IS YOUR ATHLETE.



The world leader in sports flooring since 1891



Horner Flooring is the oldest and longest-standing member of the Maple Flooring Manufacturers Association (MFMA), with maple sports flooring roots dating back to 1891 – the same year the game of basketball was invented by Dr. James Naismith.

FIND US ELSEWHERE



www.hornerflooring.com



@HornerFloor



<http://www.facebook.com/HornerFlooring>

TABLE OF CONTENTS

Rancho Solano.....	4
Horner.....	5
Preparations.....	7
Installation.....	10
Finishing Process.....	14
Grand Opening.....	15
Questions.....	16

CHAPTER 1:

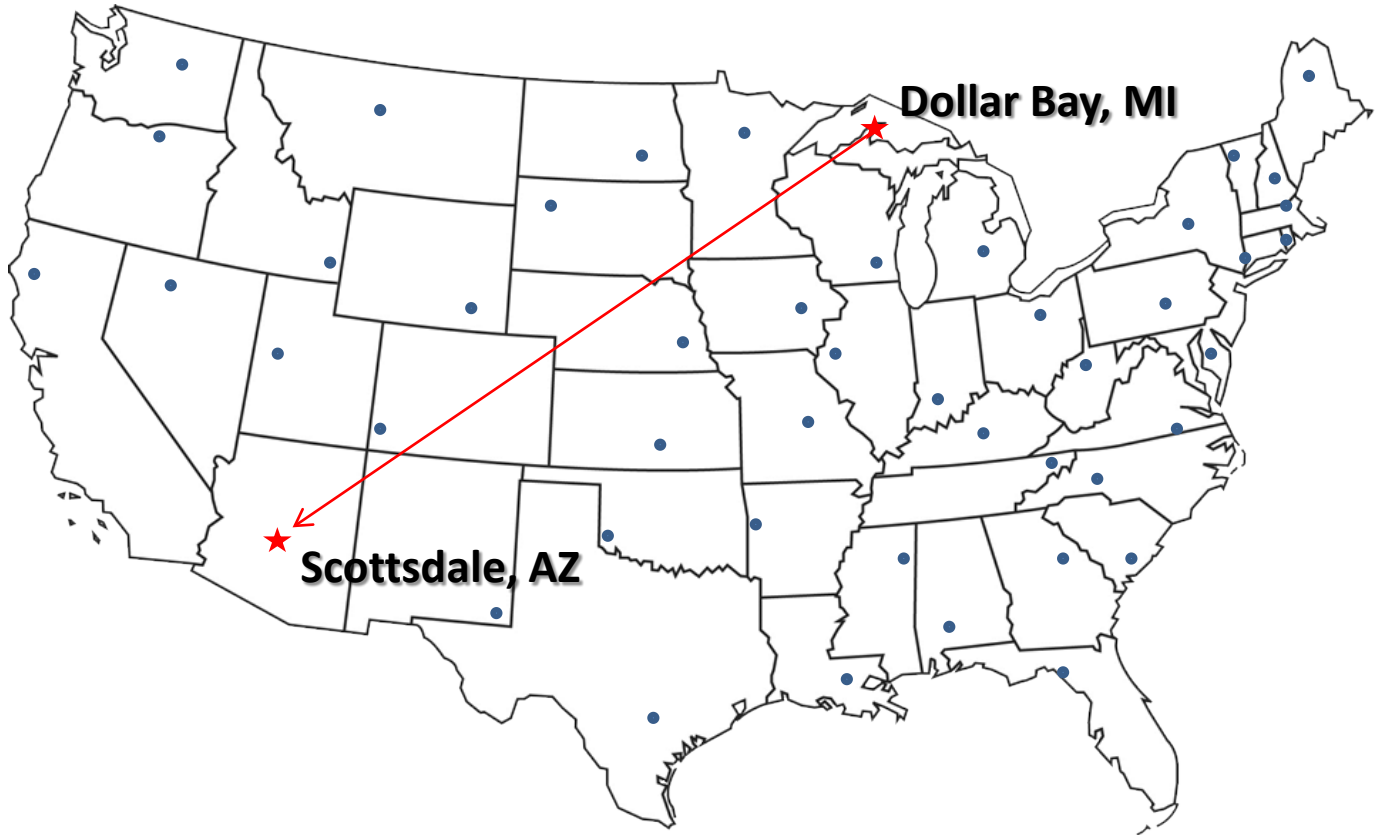
RANCHO SOLANO

Rancho Solano Preparatory School is a school system with instruction for preschool through High School and is located in Scottsdale, Arizona. Their new gym floor began installation in February, 2013.



CHAPTER 2:

HORNER




Horner Flooring assists customers around the US.

No matter your location, we can help you achieve your new dream floor!

An Advanced DIN/EN-Compliant Anchored System.

- Designed to take the rigors of today's heavily-used facilities
- Anchored substrate/continuous channel option
- Consistent play and ball rebound
- Greater internal control and expansion/contraction characteristics
- Versatile applications



Horner MFMA Maple

CRP channel

Pre-engineered subfloor

7/16" ECO™ pad or optional SAFE™ pad

SPECIFY LONG LIFE L2

EN

DIN

Controlled Response Performance System

Through a consultation discussing their needs, Rancho Solano decided upon our Controlled Response Performance System.

CHAPTER 3:

PREPARATIONS



The future home of a Horner Floor: Rancho Solano Preparatory School



MAKING OF A HORNER FLOOR: RANCHO SOLANO EDITION



The 2nd & Better maple (selected by Rancho Solano) leaves Dollar Bay, Michigan.

And arrives on schedule at its destination in Scottsdale, Arizona.



MAKING OF A HORNER FLOOR: RANCHO SOLANO EDITION



The hardwood is moved indoors to begin the acclimation process. It is then placed into its new home on pallets.



CHAPTER 4:

INSTALLATION



The 6 mil poly is put in place to help with moisture control.

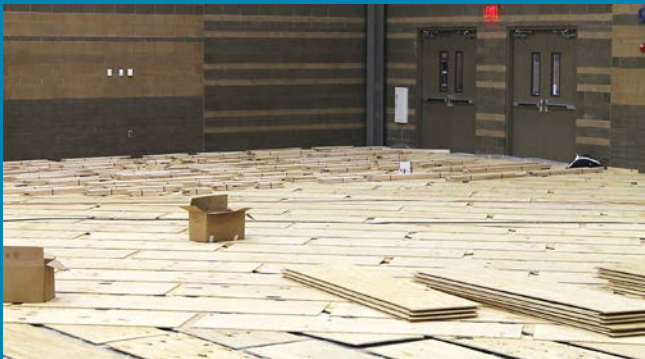
MAKING OF A HORNER FLOOR: RANCHO SOLANO EDITION



- Horner certified installer, Performance Systems, begins to lay the CRP system subfloor



- Subfloor Panels are cross-laid to increase structural support

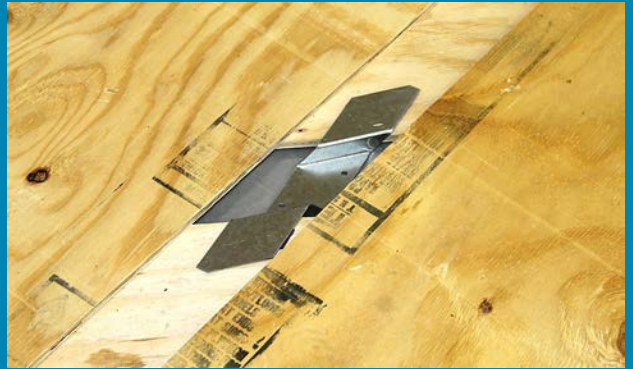


- Good progress is being made for the new installation

- The workers begin to insert CRP Restraints between the panels



- Here's a closer look at a CRP Channel



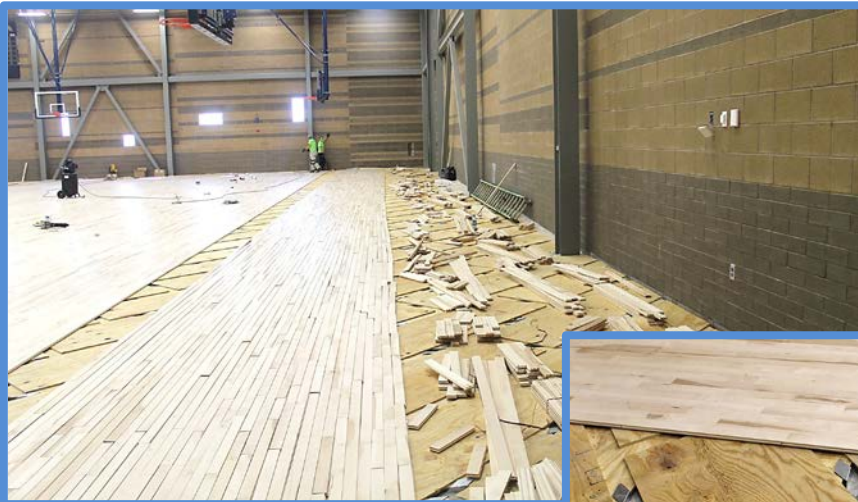
- Here's a bird's eye view of the inserted CRP Channels



MAKING OF A HORNER FLOOR: RANCHO SOLANO EDITION



Next, the crew begins to lay the hardwood. Here's a look at the installed and uninstalled hardwood.



CHAPTER 4:

FINISHING PROCESS



Here's a panorama of the floor in the finishing process, and a view of the hardwood floor after installation and the finishing process.



CHAPTER 5:

GRAND OPENING

Here is the completed floor and a photo of the first game on the new Horner floor.



To download a FREE eBook on the process of game markings, click here!

For more photos of Horner Floors and Installations and for more information about Horner's flooring systems, check out Horner's website at hornerflooring.com.

Questions?

Contact us!



Karl Borree - kborree@hornerflooring.com



www.hornerflooring.com



@HornerFloor



<http://www.facebook.com/HornerFlooring>

