



kravet  
×  
STANTON





# kravet × STANTON

This exclusive collection captures the essence of Kravet's renowned textile designs, skillfully translating fabric textures and hues into floorcoverings that add depth, sophistication, and warmth to any space.

With Stanton's expertise in carpet craftsmanship and Kravet's visionary approach to color and pattern, this collection brings a fresh, elevated aesthetic to interiors, offering designers and homeowners an elegant extension of Kravet's celebrated fabric artistry beneath their feet.





## TABLE OF CONTENTS

### **Wire Wilton**

Albert	4
Allegra	6
Korey	8

### **Flatweave**

Alhambra	10
Asscher	12
Aurora	14
Cassio	16
Gracie	18
Renata	20
Shetland	22
Ziggy	24

### **Hand Loomed**

Brody	26
Kashmiri	28

### **Natural Fiber**

Cape Town	30
Durban	31
Newcastle	32
Sadie	34

### **Performance**

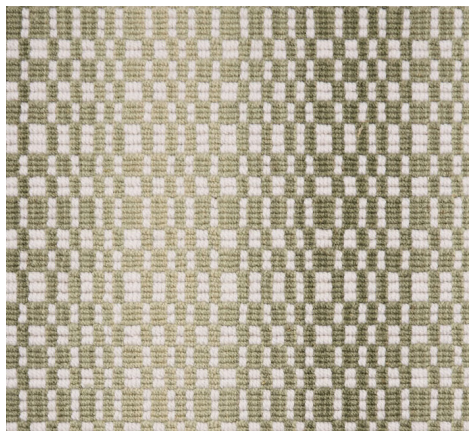
Cedar Point	36
Governors	38
Leeward	40



# Albert

Wire Wilton • 90% Wool, 10% Nylon • Pattern Repeat: 19.75" W x 1.5" L

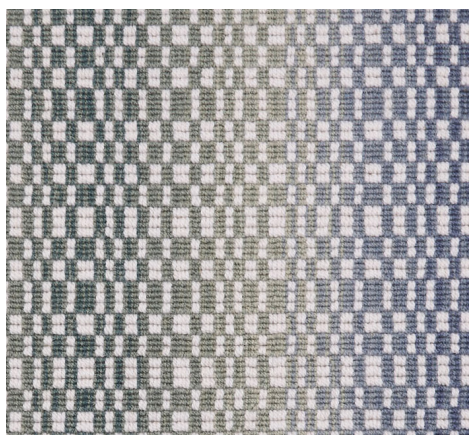
Albert is a sophisticated blend of chic, fabric-inspired texture and modern elegance. This exquisite carpet features a refined grid pattern, creating a small-scale geometric look that feels effortlessly timeless. What sets Albert apart is its gentle color ombre, seamlessly blending shades across the width of the carpet. This nuanced gradient, paired with a carefully curated palette, brings a warm, contemporary charm to your space, making it as visually captivating as it is cozy.



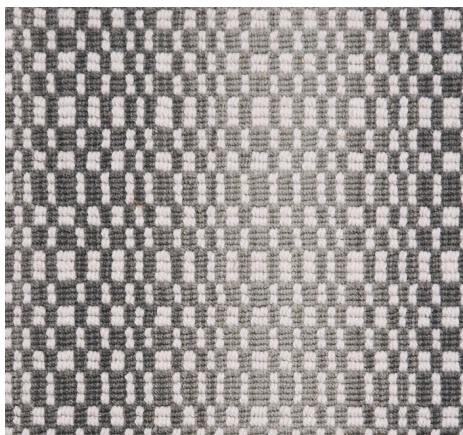
MOSS 60763



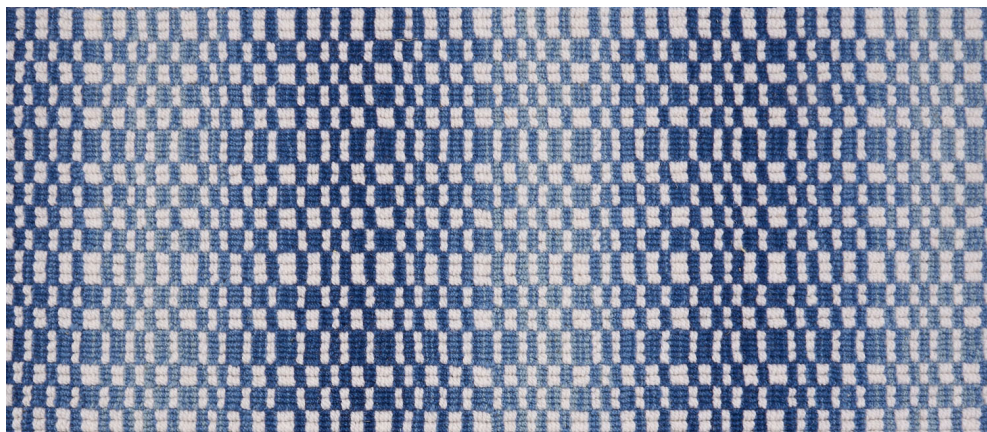
TAN 60765 (Shown in room)



ADRIATIC 60762



METAL 60761



COBALT 60764













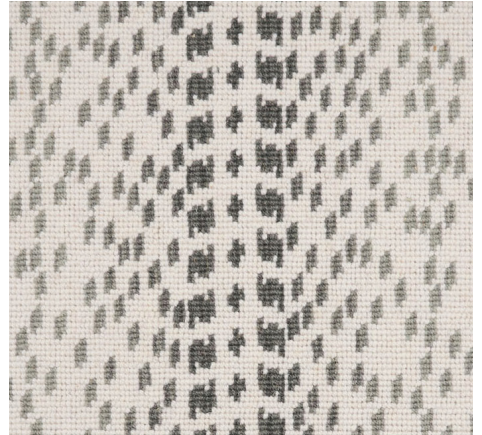
# Allegra

Wire Wilton • 90% Wool, 10% Nylon • Pattern Repeat: 19.75" W x 26" L

Allegra is a masterpiece that brings timeless elegance to modern interiors. Allegra features a captivating linear pattern that flows gracefully, creating a sense of movement and rhythm across the floor. Crafted with a meticulous Wire Wilton technique, this all-loop construction is as enduring as it is luxurious.



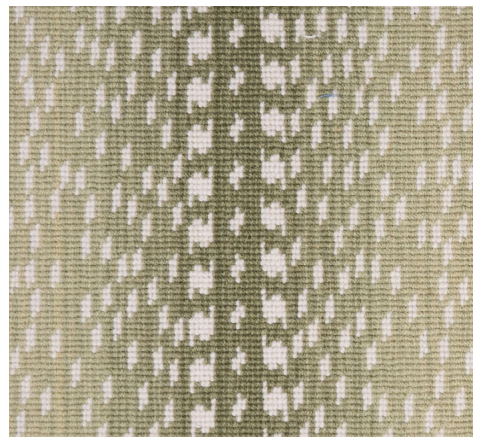
TAN 72555 (Shown in room)



METAL 72551



COBALT 72554



MOSS 72553



ADRIATIC 72552



# Korey

Wire Wilton • 90% Wool, 10% Nylon • Pattern Repeat: 19.75" W x 4.75" L

Korey is a captivating fusion of classic design and modern elegance. Korey reimagines the timeless diamond motif with a fresh, contemporary touch. This geometric masterpiece, crafted with the refined Wire Wilton technique, boasts an all-loop construction that ensures both durability and sophistication. Korey enchants with its graceful color ombre, softly transitioning shades across the carpet's width.







TAN 54234 (Shown in room)



MOSS 54233



ADRIATIC 54232



METAL 54231



COBALT 54235





# Alhambra

Flatweave • 100% New Zealand Wool • Pattern Repeat: 14" W x 2.25" L

The Alhambra carpet weaves together a delicate geometric design with a captivating vertical ombre effect, where bold and subtle hues dance in and out of focus. Crafted from high-quality New Zealand boucle wool, its nubby texture offers a soft yet sophisticated hand, echoing the boucle trend seen in luxury home furnishings. This flat-woven beauty brings an understated elegance, making it the perfect blend of modern style and timeless warmth.







SKY 22243  
(Shown on cover)



FOG 22245



DESERT ROSE 22241  
(Shown in room)



EMERALD 22242



TOFFEE 22244





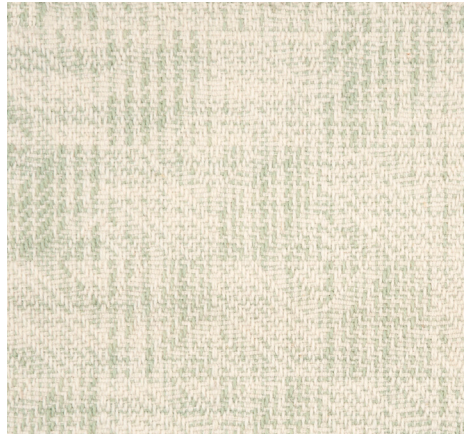




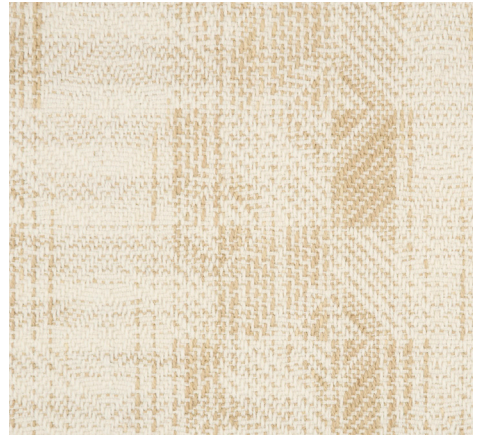
# Asscher

Flatweave • 100% New Zealand Wool • Pattern Repeat: 6.5" W x 7" L

Asscher is a subtle blend of texture and artistry with its distressed diamond motif that evokes natural movement. Crafted with space-dyed yarn, this design captures the beauty of imperfection, creating a broken effect that adds depth and intrigue. Its soft, textural feel invites you to experience the allure of understated elegance, perfect for elevating any interior space.



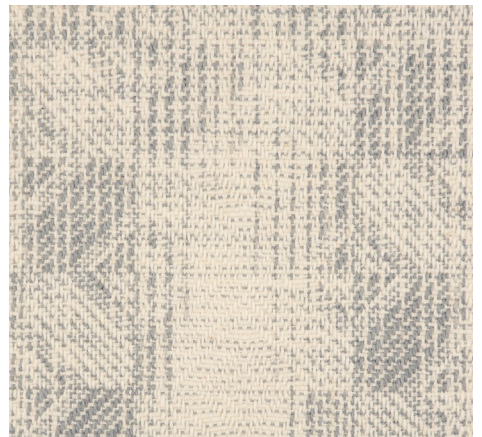
SPRING GREEN 88885



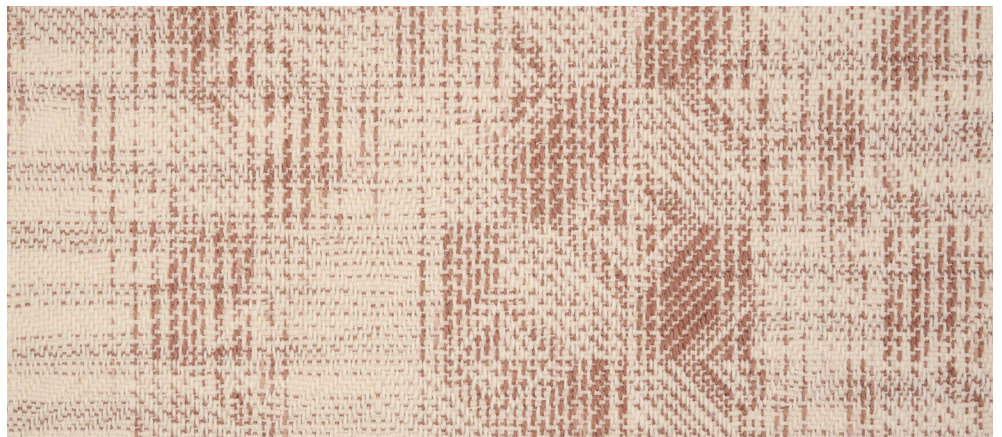
PEARL 88883



HAZE 88882



SLATE 88884



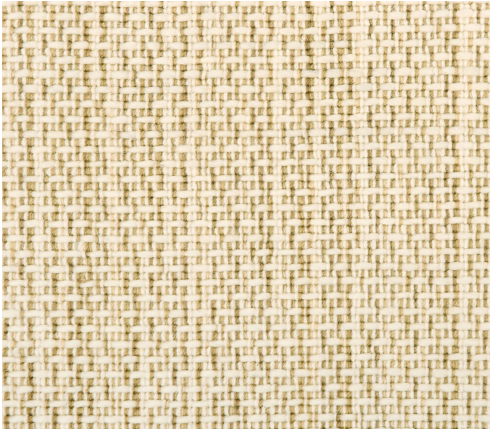
DESERT ROSE 88881 (Shown in room)



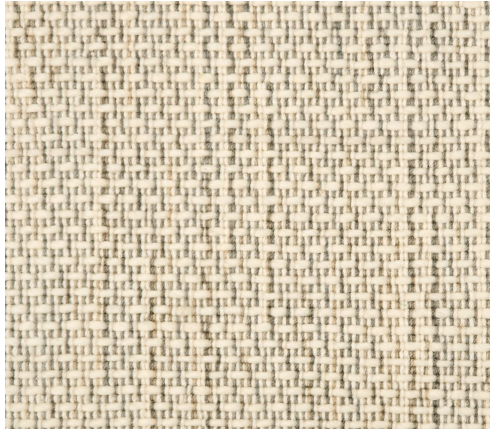
# Aurora

Flatweave • 65% Wool, 35% Nylon • Pattern Repeat: .5" W x 1" L

Immerse yourself in the sophisticated texture of the Aurora carpet, where a luxurious wool and nylon blend come together in perfect harmony. The vertically spaced-dyed fibers, woven with three beautifully blended hues, create a subtle striated effect that adds depth and visual intrigue. Felted wool runs through the weft, offering a high-quality feel that exudes both comfort and timeless elegance.



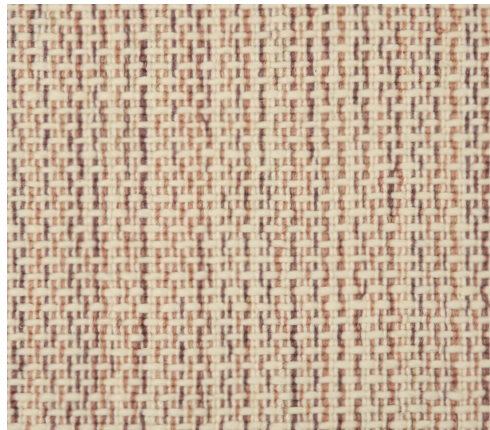
SAND 50174



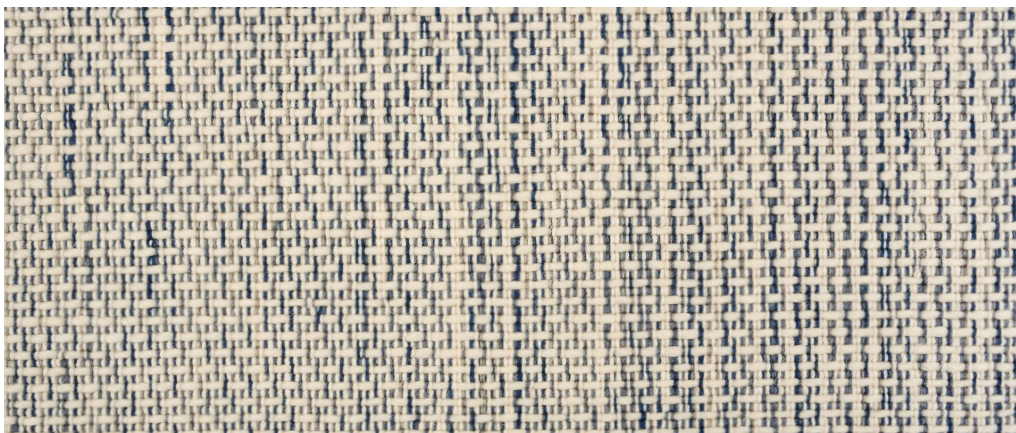
DOVE 50172



JADE 50173



DESERT ROSE 50171 (Shown in room)



SLATE 50175





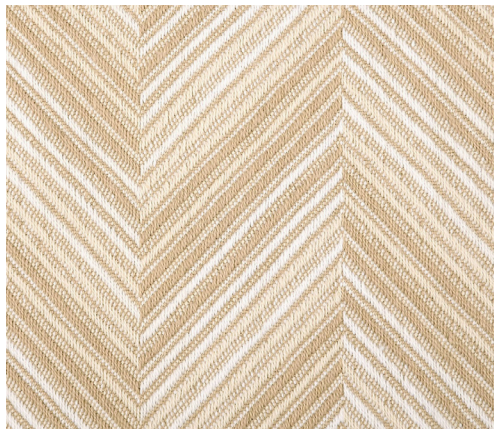




# Cassio

Flatweave • 100% New Zealand Wool • Pattern Repeat: 10.75" W x 7.5" L

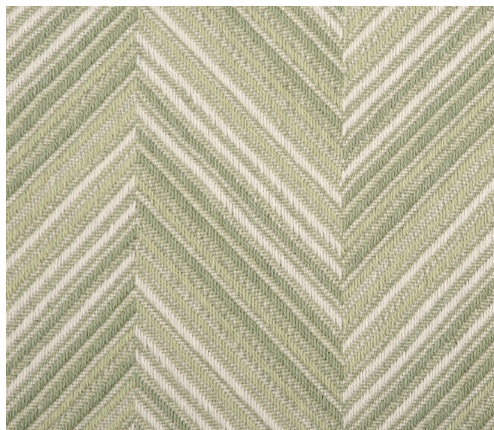
Breathe new life into your space with the Cassio carpet, where dimensional herringbone meets the softness of New Zealand wool. Its fresh, multi-colored design and clean palette offer a balance of sophistication and modernity, while the lofty construction adds depth and texture. With a flat-woven foundation and a luxurious soft hand, Cassio creates an inviting and elegant atmosphere.



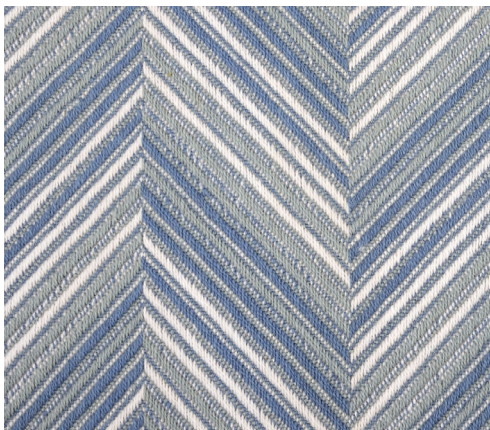
PEARL 35182



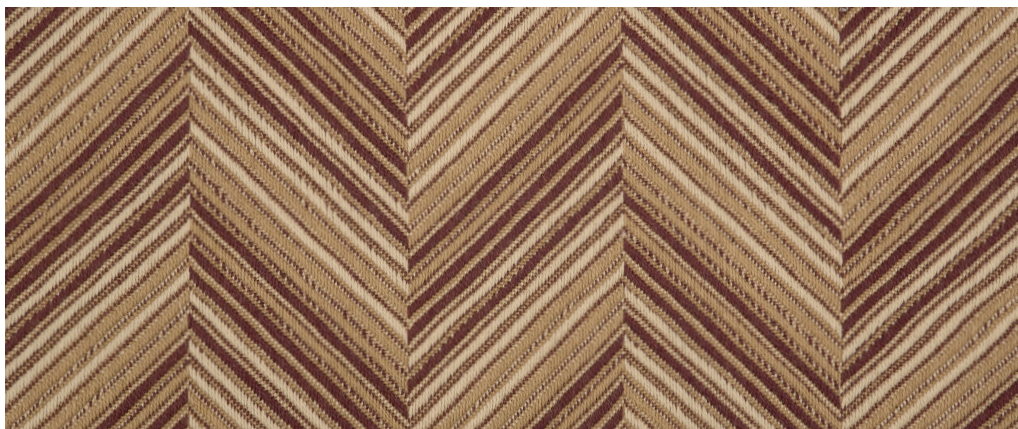
PLATINUM 35183



SPRING GREEN 35184



STEEL BLUE 35185 (Shown in room)



CONFETTI 35181







AD at 100  
AD at 100  
EVOCATIVE STYLE



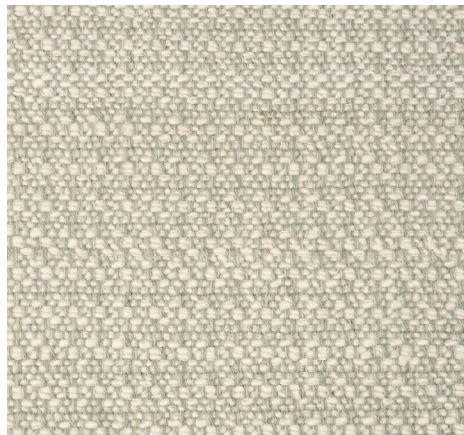




# Gracie

Flatweave • 90% New Zealand Wool, 10% Nylon • Pattern Repeat: .75" W x 1" L

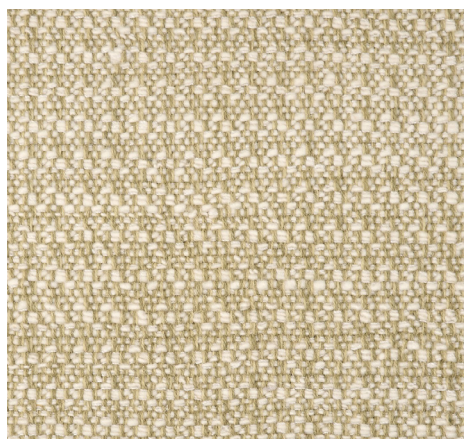
Gracie captures the essence of fabric-inspired elegance with its luxurious hand-spun New Zealand wool, offering a delightful texture of thick and thin fibers. The subtle touch of nylon adds a hint of shine, enhancing the soft refined appearance. With its charming irregularity and artisanal feel, Gracie brings warmth and understated sophistication.



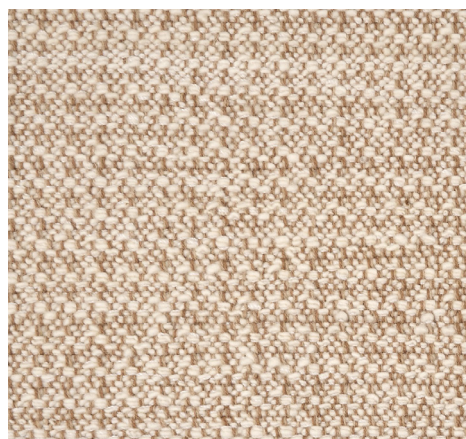
MIST 59692



FOG 59696



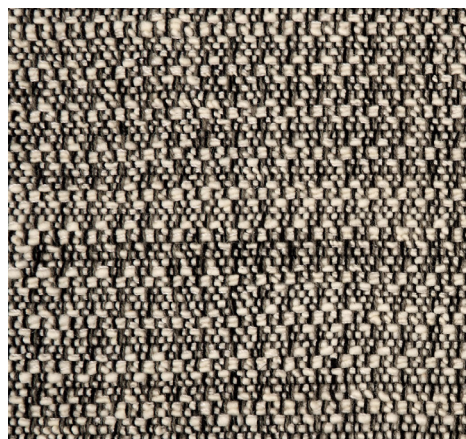
BRINE 59693



TOFFEE 59695



SKY 59691



ONYX 59694 (Shown in room)







# Renata

**Flatweave • 100% Wool • Pattern Repeat: 1" W x 11.5" L**

Renata captivates with its bold horizontal ombre design, where multi-tonal hues gracefully blend across a small-scale geometric weave. This flat-woven beauty offers a touch of rustic charm, evoking warmth and natural elegance. Its striking pattern repeats effortlessly, creating a dynamic yet refined look that brings an inviting, artisanal feel.



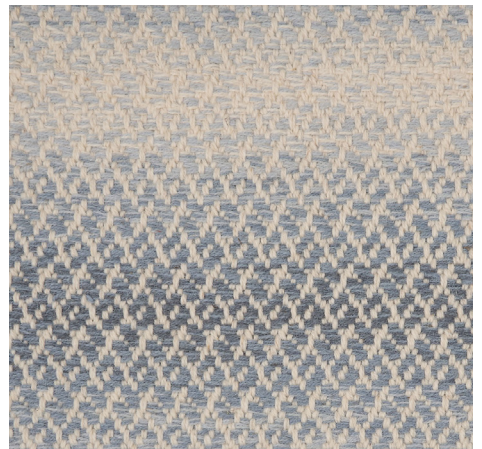
MATCHA 17252



CLAY 17251



BARLEY 17253



SKY 17254



BERRY 17255 (Shown in room)



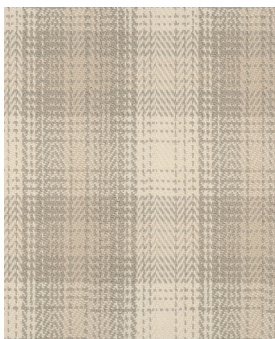


# Shetland

Flatweave • 100% New Zealand Wool • Pattern Repeat: 9.25" W x 7.5" L

The Shetland carpet exudes a refined elegance, crafted from fine count New Zealand wool for a pristine tailored finish. Its classic plaid-inspired design, with a subtle herringbone weave, adds a touch of timeless sophistication. The high-quality yarn gives the pattern a soft brilliance, creating a medium-scale look that is both versatile and effortlessly luxurious.





FOG 50393



BARLEY 50392  
(Shown in room)



AMBER WINDS 50391



SEPIA 50395



SAPPHIRE 50394



# Ziggy

Flatweave • 100% Wool • Pattern Repeat: 3" W x 9" L

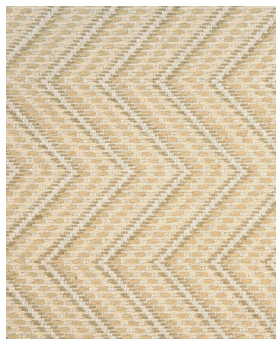
Step into bold modernity with the Ziggy carpet, featuring an eye-catching, oversized zigzag pattern that brings dynamic movement. The harmonious multi-color design, crafted with analogous hues, creates a soothing yet striking visual. Its lofty weave combined with a flat weave base offers both texture and sophistication, making Ziggy the perfect mix of contemporary style and comfort.



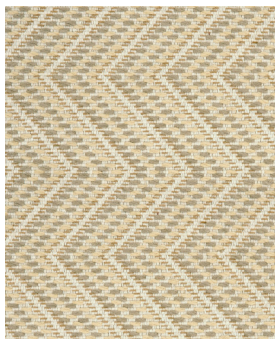




PERSIMMON 43583  
(Shown in room)



PEARL 43582



STONE 43585



BRINE 43581



SKY 43584









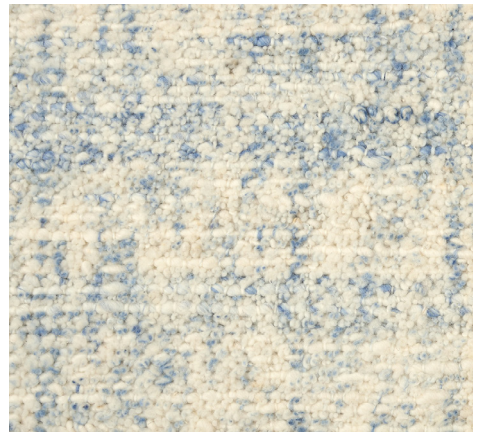
# Brody

Hand-loomed • 100% New Zealand Wool

Brody is a luxurious fusion of casual charm and high-end elegance. This hand-loomed carpet features a chunky, dense pile with an exquisite cut-and-loop design that radiates sophistication. Its crisp white base is brought to life with delicate accents of fresh, vibrant colors, carefully blended by hand into the yarn. This meticulous, artisanal process allows the color pops to dance organically across the surface, creating a rich, one-of-a-kind texture that feels both natural and bespoke.



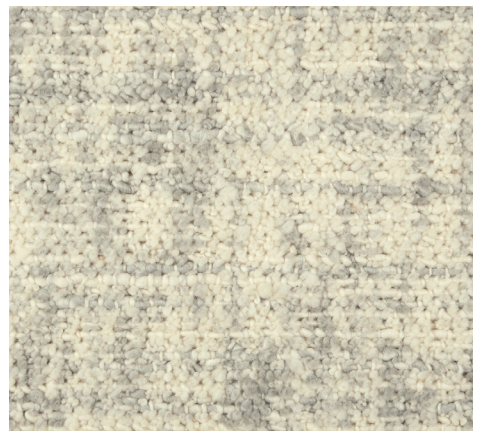
SAND 52193



SKY 52191 (Shown in room)



MOSS 52195



FOG 52192



BARK 52194



# Kashmiri

Hand-loomed • 70% Cashmere, 30% New Zealand Wool

Indulge in the luxurious softness of Kashmiri. This carpet is crafted with 70% cashmere for an exquisitely refined feel. The dense, lofty pile adds both texture and richness, while its high-quality yarn ensures deep, saturated colors that take on a natural heathered elegance. With a subtle tip sheer finish, Kashmiri brings timeless sophistication and unmatched comfort.



BONE 20431 (Shown in room)



PLATINUM 20435



SAND 20436



CARAMEL 20432



SEPIA 20437



OLIVE 20434



CRANBERRY 20433







# Cape Town

**Natural Fiber • 55% Wool, 40% Sisal, 5% Polypropylene**

**Pattern Repeat: 1.5" W x 7" L**

Cape Town captures the essence of natural beauty with a refined small-scale geometric design. The updated diamond chevron motif, woven from semi-worsted wool with a touch of sisal, brings a sophisticated texture to this flat-woven masterpiece. Perfectly balancing elegance and rustic charm, Cape Town evokes the timeless allure of places known for their ivory heritage.



NATURAL 72391





# Durban

**Natural Fiber • 65% Wool, 30% Sisal, 5% Polypropylene**

**Pattern Repeat: 5.25" W x 1" L**

Durban brings a contemporary twist to the classic chevron pattern, with a sophisticated blend of natural fibers and modern durability. A hint of sisal complements the semi-worsted natural white wool, creating a beautiful contrast in texture, while the polypropylene ensures lasting resilience. This flat-woven design offers a perfect blend of elegance and practicality.



NATURAL 71951





# Newcastle

Natural Fiber • 55% Wool, 40% Sisal, 5% Polypropylene • Pattern Repeat: 1.5" W x 2.25" L

Newcastle is a refined blend of natural fibers and high-quality wool, evoking the timeless allure of places famed for their ivory. Its variation on a classic basket weave texture creates a luxurious lofty flatweave with a hint of sisal for added depth. The semi-worsted wool in the weft enhances the tactile experience, bringing a touch of elegance to any space.







NATURAL 72411





# Sadie

**Natural Fiber • 55% Jute, 45% Polyester**

Sadie is a harmonious blend of natural fibers and rich timeless tones. The cut and loop texture, crafted from fiber-dyed polyester and jute yarn, creates a subtle striate effect that adds depth and character. With its unique texture and organic feel, Sadie brings a warm, grounded elegance to any space, perfect for those seeking a natural yet sophisticated touch.



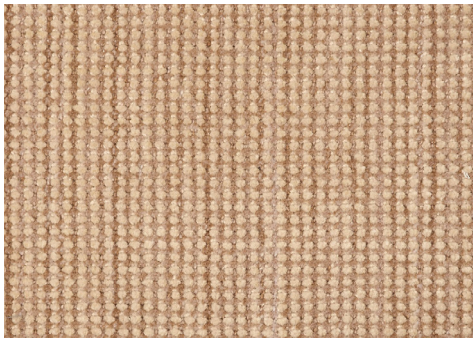




SANDSTONE 23253



PEBBLE 23252 (Shown in room)



CAMEL 23251





# Cedar Point

Luxury Performance • 100% SD UV-Stabilized Polypropylene • Pattern Repeat: 5.5" W

Elevate your indoor or outdoor spaces with Cedar Point, where artisanal craftsmanship meets effortless style. Hand-stitched braids in three harmonious colors create a dynamic, slight ombre effect, transitioning from light to dark with a natural flow. Its braided construction not only provides durability but also weaves a story of elegance and comfort, perfect for any setting that demands both beauty and resilience.







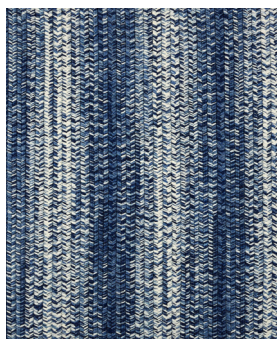
BIRCH 27601



MATCHA 27602



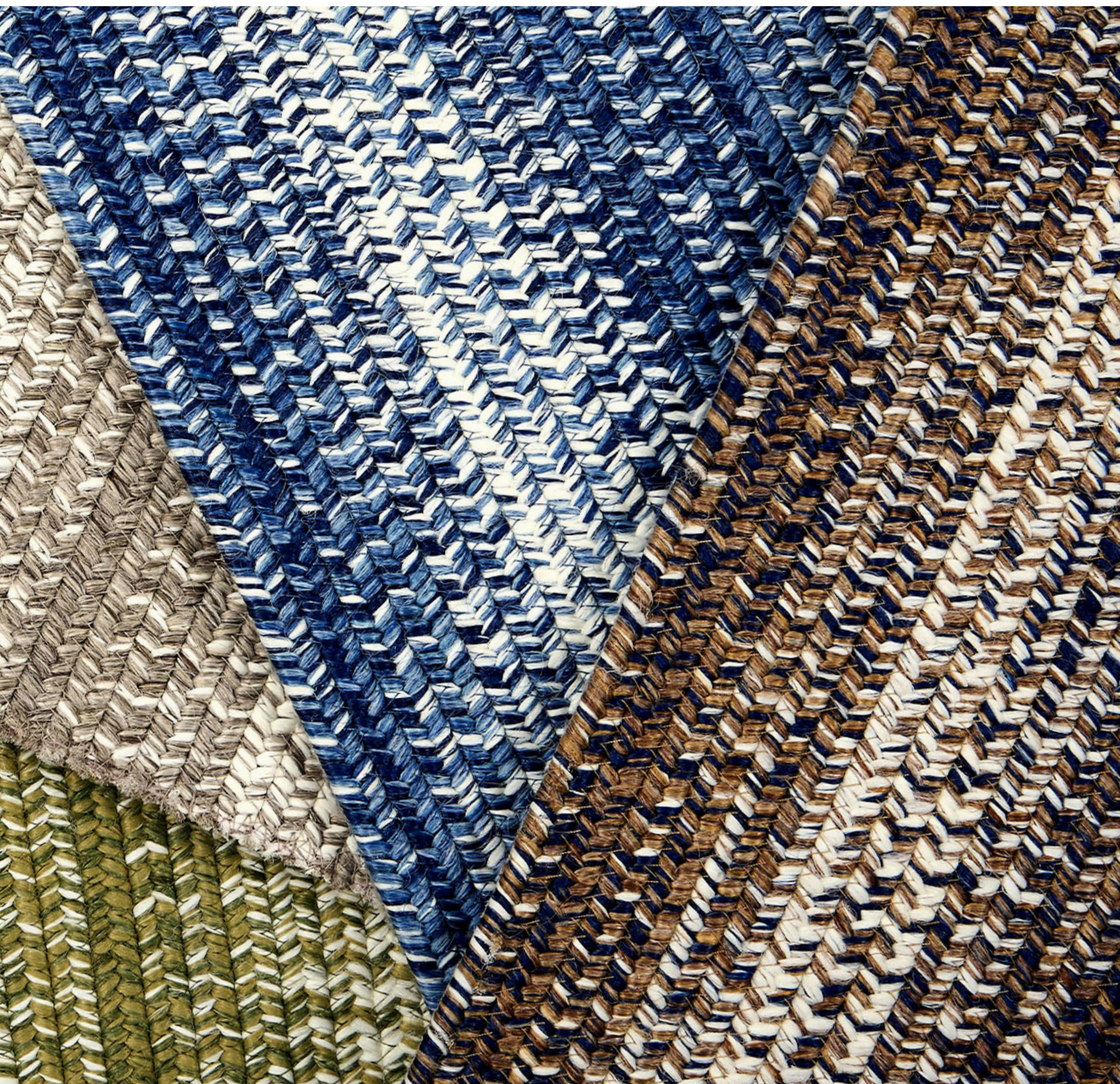
TOFFEE 27605



SAPPHIRE 27603



SHORE 27604





# Governors

Luxury Performance • 100% SD UV-Stabilized Polypropylene • Pattern Repeat: 3.5" W

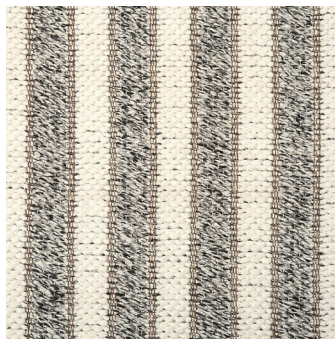
Governors combines timeless style with exceptional durability, perfect for both indoor and outdoor spaces. Its classic vertical stripes, created by chunky multi-toned yarns, offer a melange effect that adds depth and texture. Made from solution-dyed polypropylene, it ensures excellent cleanability and fade resistance, maintaining its beauty season after season.







MIST 20501 (Shown in room)



ONYX 20502



TOFFEE 20504



RUBY 20503





# Leeward

Luxury Performance • 100% SD UV-Stabilized Polypropylene • Pattern Repeat: 1" L

Leeward brings a refined touch to outdoor living with its small-scale horizontal stripe and subtle braid-like texture. Crafted from solution-dyed polypropylene, this multi-tonal carpet boasts a palette of 5-6 harmonious hues per colorway, ensuring durability and beauty in any environment. Effortlessly stylish and easy to maintain, Leeward is the perfect blend of practicality and sophistication for your outdoor spaces.



PUMICE 77552



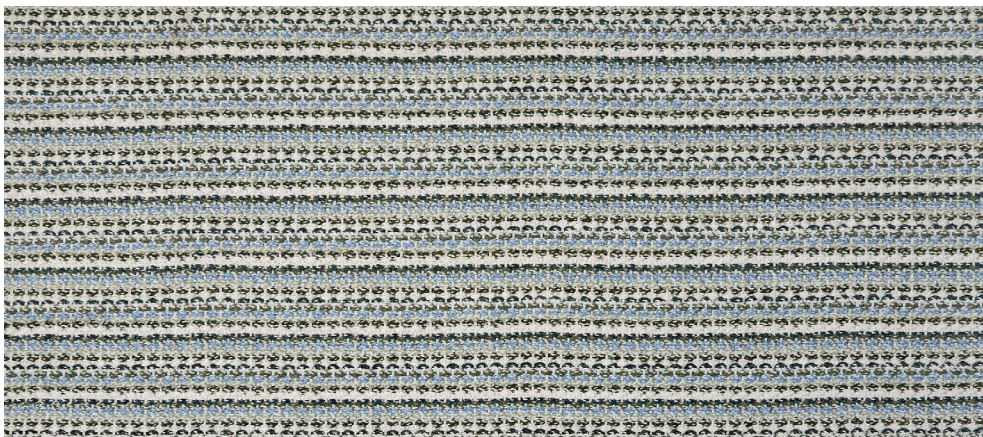
TOFFEE 77555



RUBY 77553



SHORE 77554



DEEP TROPIC 77551













# Create a rug

*tailored to your space*

Custom sized rugs and runners are available up to the full width of the carpet without a seam and virtually any length.

## Select Your Style & Size

Any of our carpet styles can be custom sized up to the full width of the carpet and virtually any length for the perfect area rug as well as hall and stair runner and in most cases within 5 business days.

## Select Your Finishing Options

Choose from modern edge serging, hand serging, machine serging, cotton, linen and alfresco fabrics (outdoor friendly), as well as faux leather.

## Select Your Attached Rug Pad

Depending on usage, you have several options for the attached rug pad:

### Felt Backing

Provides increased comfort underfoot, hides any fabrication on the back of the rug, and protects a wood floor from abrasion (indoor use only).

### Non-Skid Padding

Provides increased comfort underfoot, hides any fabrication on the back of the rug, protects a wood floor from abrasion, extends the life and stability of the rug, holds the rug in place (indoor use only) and eliminates the bunching up and unsightly appearance of a separate pad.

### Indoor/Outdoor-Friendly Padding

This outdoor-friendly cushion provides increased comfort underfoot, hides any fabrication on the back of the rug, and extends the life and stability of the rug.



Create your rug

For additional information, please visit  
[stantondesign.com/createrug](http://stantondesign.com/createrug)

## Rug Finishes



Machine Serge



Modern Edge Serge

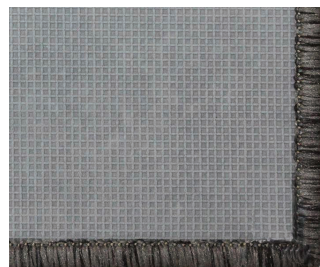


Hand Serge



Fabric Binding

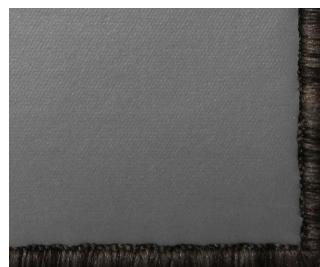
## Attached Pads



Non-Skid (Indoor)



Felt (Indoor)



Indoor/Outdoor-Friendly



# kravet × S T A N T O N

The Kravet x Stanton display offers the unique ability to merchandise the entire offering by color. Each individual style is featured on its own board with the alternate colors being displayed on the back. The easy to navigate wing arm functionality allows for an intuitive and simplified shopping experience for both the designer and the consumer. Large samples allow for greater design impact. The takeaway samples are an added feature and benefit to help drive sales.

**The display measures 114" W X 27" D X 96" H**  
(not including wing panels)



Scan QR Code above for IOS Devices

Augmented Reality Experience  
to place in your showroom



Scan QR Code above for Android Devices



## PULL OUT BINS

9.25" W X 21.75" D X 9.5" H with dividers and changeable labels. Holds 336 samples total.



## BOARDS

25" W X 25" H boards with hidden handle and printed swatches.



## WING

Holds 108 boards that each slide out from the side.







kravet × STANTON